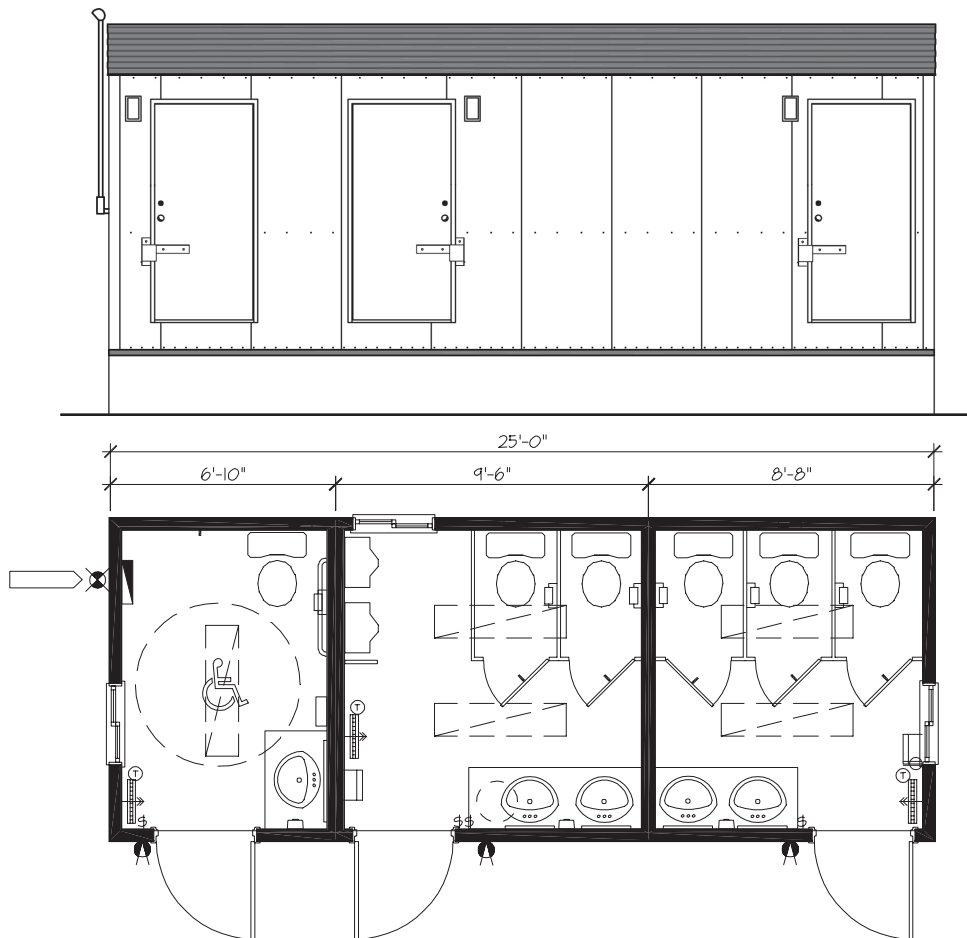


10 x 25

Washcar - H/C Accessible



General Specifications

Exterior Siding:	Metal siding & metal fascia	Ceiling:	Vinyl-clad gyproc (white)
Interior Walls:	FRP (fibre reinforced plastic) paneling (white)	Roof:	EPDM (rubber) roofing
Windows:	30" x 18" XO horizontal slider with insect screen	Heating/Cooling:	Electric forced-air heaters (240V)
Exterior Doors:	Solid-core door with passage set, deadbolt, check chain and steel lockbox	Lighting:	Fluorescent lights, 2-bulb, surface-mounted; Exterior lights
Interior Doors:	Hollow-core door, prefinished wood with passage set (if applicable)	Electrical:	120/240 volt single phase, mast & weatherhead, electrical panel
Floor:	Sheet vinyl flooring (commercial grade)	Plumbing:	Mens: 2 toilets, 2 urinals, 2 sinks and enclosed electric hot water tank (shared) Womens: 3 toilets, 2 sinks H/C: 1 toilet and sink