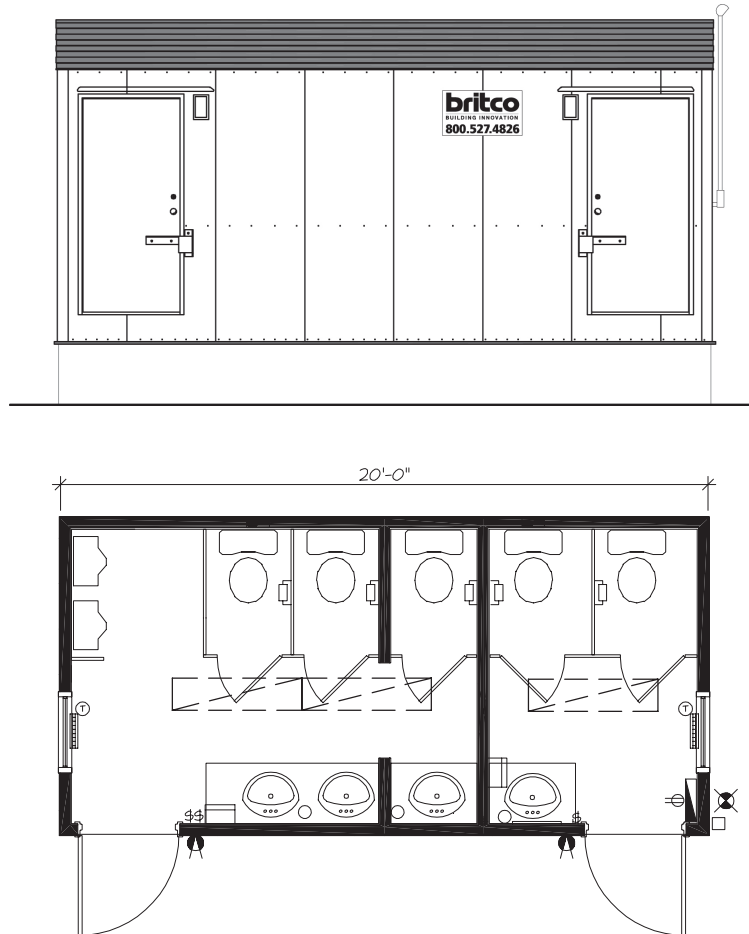


# 10 x 20 Washcar



## General Specifications

<b>Exterior Siding:</b>	Metal siding & metal fascia	<b>Ceiling:</b>	Vinyl-clad gyproc (white)
<b>Interior Walls:</b>	FRP (fibre reinforced plastic) paneling (white)	<b>Roof:</b>	EPDM (rubber) roofing
<b>Windows:</b>	30" x 18" XO horizontal slider with insect screen	<b>Heating/Cooling:</b>	Electric forced-air heaters (240V)
<b>Exterior Doors:</b>	Solid-core door with passage set, deadbolt, check chain and steel lockbox	<b>Lighting:</b>	Fluorescent lights, 2-bulb, surface-mounted; Exterior lights
<b>Interior Doors:</b>	Hollow-core door, prefinished wood with passage set (if applicable)	<b>Electrical:</b>	120/240 volt single phase, mast & weatherhead, electrical panel
<b>Floor:</b>	Sheet vinyl flooring (commercial grade)	<b>Plumbing:</b>	Mens: 3 toilets, 2 urinals, 3 sinks and enclosed electric hot water tank (shared) Womens: 2 toilets, 1 sink