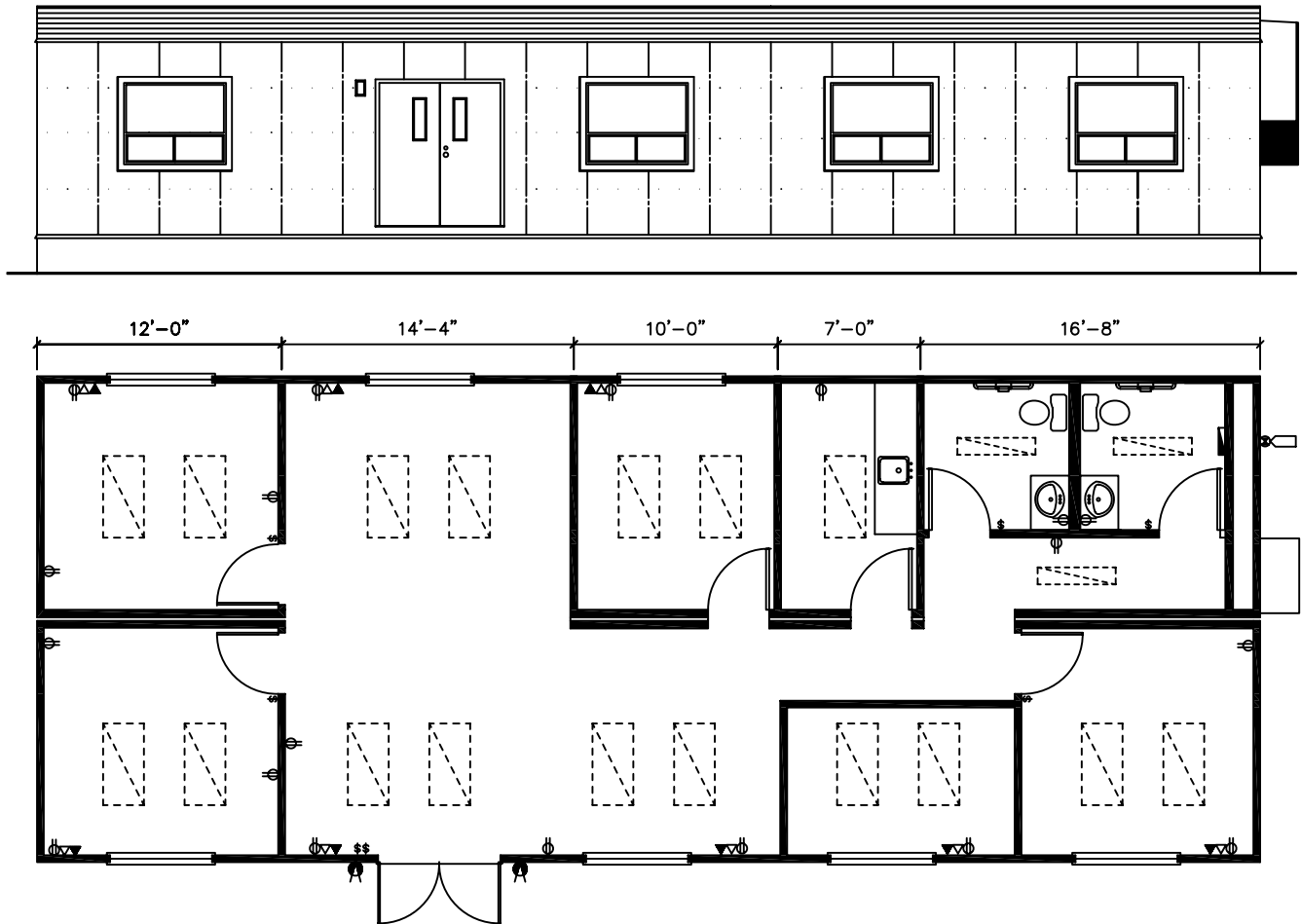


24' x 60' DESIGNER OFFICE COMPLEX - L2090



GENERAL SPECIFICATIONS

Roof - 45 mil. EPDM roofing
- T-Bar suspended ceiling

Walls - Exterior: "Ranchwall" vertical wood siding
- Interior Finish: vinyl clad paneling (Norwich Pearl)

Windows - 5'-0" x 4'-0" O/XO window with insect screens and security bars (interior)

Plumbing - Washrooms: H/C toilet & lav basin with open under counter
- Kitchen: 6' counter with cabinets under c/w stainless steel sink and 6 gallon HWT

Floor - VC Tile Flooring (commercial grade)

Doors - Exterior - insulated steel door with vision strip windows, deadbolt and passagset
- Interior - hollow core prefinished wood doors with passage sets

Heating - Exterior wall mounted "BARD" HVAC unit (electric) with t-bar ducting

Electrical - 120/240 volt electrical panel, 125 amps, single phase, mast & weather head
- Electrical receptacles and tel/data conduits
- Exterior lights (two in total)
- Fluorescent lights, 4-bulb, recessed

britco
FACTORY BUILT

NEED SPACE FAST?

Phone: 604.888.2000

Fax: 604.888.2086

Toll Free: 800.527.4826

Website: www.britco.com